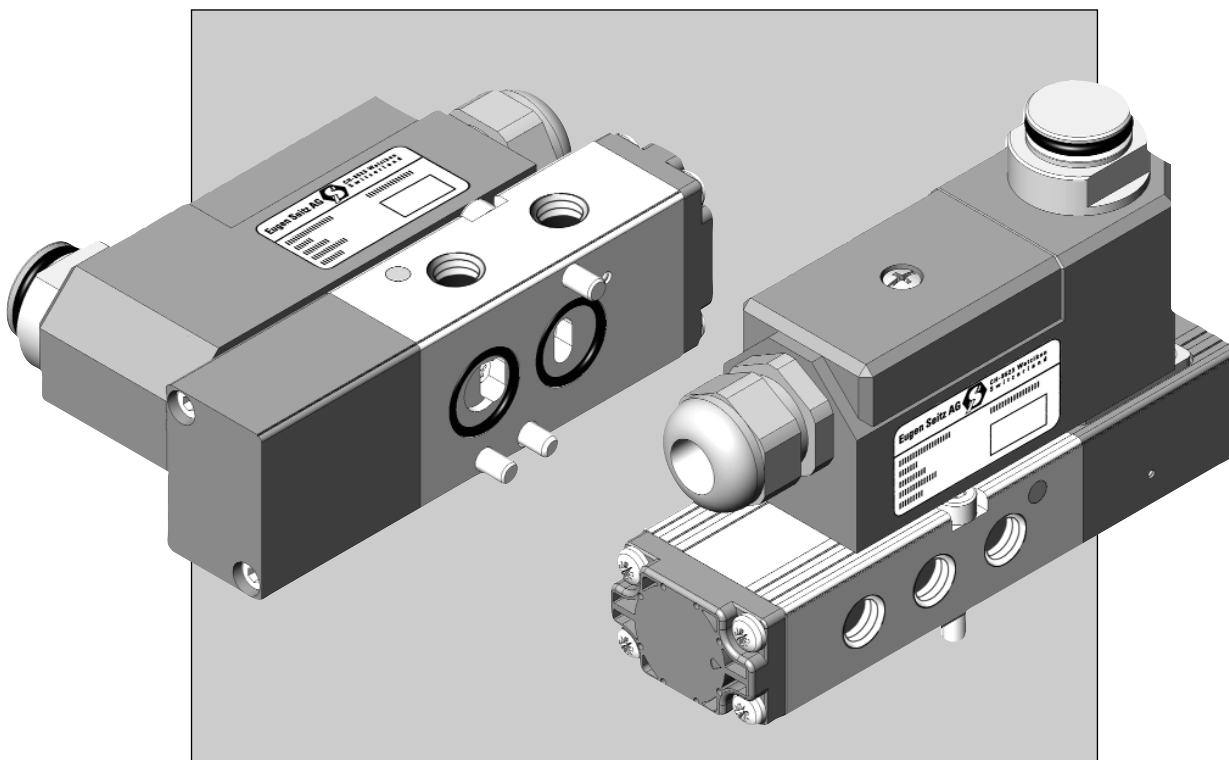


NAMUR solenoid valves for pneumatic actuators

- **3/2 and 5/2 way solenoid valves**
- **Pilot operated**
- **Orifice size** **7 mm**
- **Pressure range** **2 ... 8 bar**
- **EEx me II T6** **1.8 W**
- **EEx ia IIC T6** **200 mW**
- **Plug-in connector** **DIN 43650 A, 1.8 W**



The valve group LC-11

The valve group LC-11 is added to valve group CP-11 and CP-12 from the series of pilot operated solenoid valves. They can be used for open-air assemblies under normal atmospheric conditions.

Application

The valves of LC-11 group are mainly used for controlling pneumatic part-run valve actuators in chemistry, pharmacy and chemical engineering. The integrated spring chamber ventilation protects the part-run valve actuators with the spring return from the hostile environment.

Standard models

Design

Pilot operated spool valves with elastomer seals.

Function

According to type 3/2 way or 5/2 way, mono-stable or bi-stable

Pressure ranges

2 ... 8 bar

Connections

NAMUR and G 1/4 (9 mm deep)

Media

- Dry, filtered compressed air (50 µm)
- Instrument air
- Nitrogen and other inert gases

Flow value

- Kv 0.92
- Qn 1060 l/min

Flow direction

Refer to functional symbol

Temperatures

– Medium: –20 ... +60°C

– Ambient: –20 ... +60°C

Please observe the allowed ambient temperature range for the solenoid!

Solenoid

Size 11

Materials

- Housing: Anodised aluminium
- Cover: Plastic strengthened with glass fibres
- Seals: Nitrile-butadiene rubber (NBR)
- Spool: Aluminium
- General: non ferrous metal free

Operating life

> 5 million switchings

Mounting position

Any position

Adapter with filter

In order to prevent functioning faults caused by impure compressed air in the solenoid valve an adapter with filter is available in the program.

The built in sieve, with mesh width 0.1 mm, retains the dirt particles and can be easily cleaned or replaced as per requirement.

The adapter has a screw thread G 1/4 with NBR O-Ring seal and is available with connection thread G 1/4 or NPT 1/4.

- G 1/4 – NPT 1/4
Order no. 125.298.00 (see figure 4)
- G 1/4 – G 1/4
Order no. 125.889.00 (see figure 4)

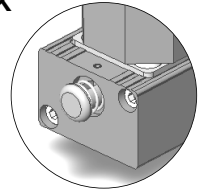
Manual override

On request versions with push button for manual operation are available.

Please follow the type designation:

- Example without manual override:
Typ LC 0732 CNE oH
- Example with manual override:
Typ LC 0732 CNE DK

Thanks to robust design, long and reliable operation can be guaranteed.



Exhaust protector IP65

Suitable for solenoid valves with NAMUR connection and integral spring chamber ventilation. The spring chamber of the actuator and the solenoid itself are protected against the penetration of aggressive ambient air or rain by the non-return system. Functional reliability and operating life are thereby increased.

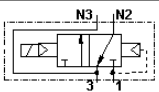
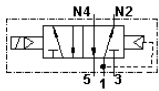
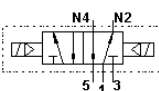
Order no. 126.920.00 (see figure 5)

NAMUR flow control plate

Intermediate flow control plates are available as accessories for the 3/2 way and 5/2 way valves with NAMUR interface.

Order no. 152.457.00 (see figure 6)
Order no. 152.458.00 (see figure 7)

Type overview

Function	Function symbol	Number of solenoids	NW [mm]	Kv-value [m³/h]	Weight [kg]	Valve type	Fig. no.
3/2 way NC		1	7	0.92	0.38	LC 0732 CNE oH ¹⁾	1
						LC 0732 CNE oH i ²⁾	
5/2 way		1	7	0.92	0.40	LC 0752 -NE oH ¹⁾	2
						LC 0752 -NE oH i ²⁾	
5/2 way bistable		2	7	0.92	0.58	LC 0752 BNE oH ¹⁾	3
						LC 0752 BNE oH i ²⁾	

¹⁾ can be used with solenoids of types 11A37, 11C37, 11F37, 11A52, 11C52, 11F52, 11A53 and 11F53

²⁾ can be used with intrinsically safe solenoids of type 11G52

Dimensional drawings

Figure 1

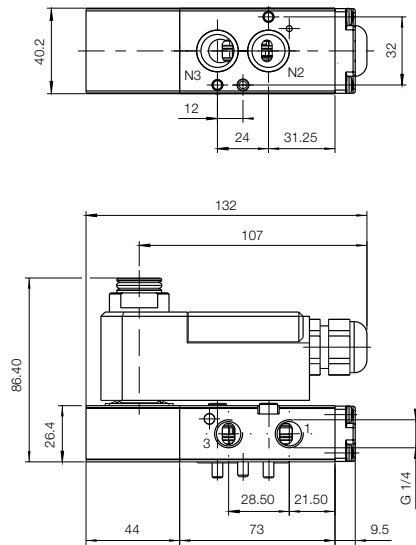


Figure 2

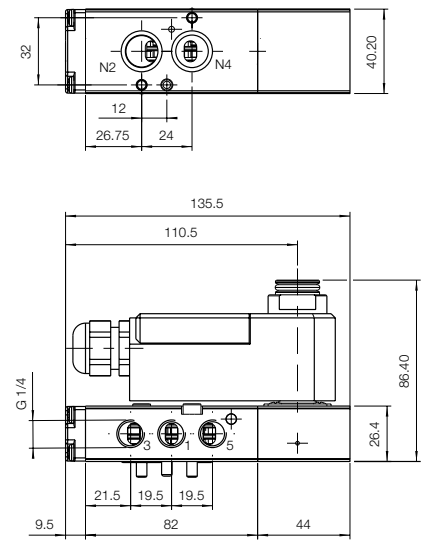


Figure 3

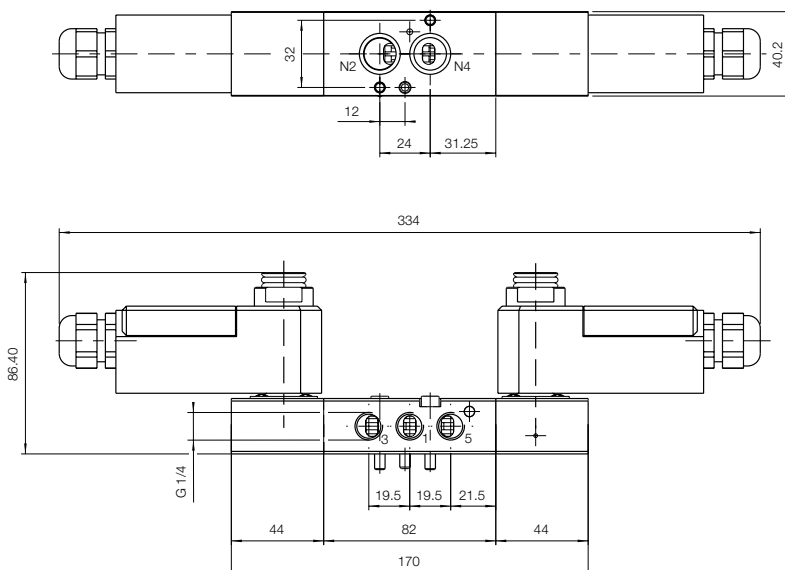


Figure 4

Adapter with filter

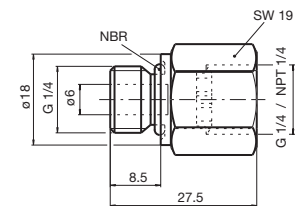


Figure 5

Exhaust protector IP65

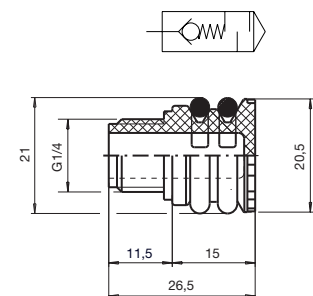


Figure 6 Flow control plate for 3/2 way valves

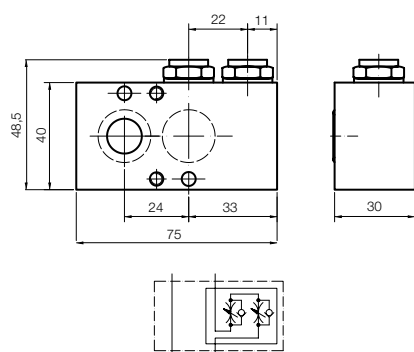
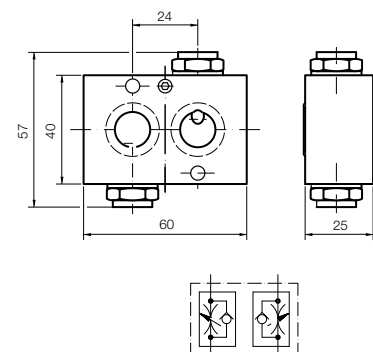
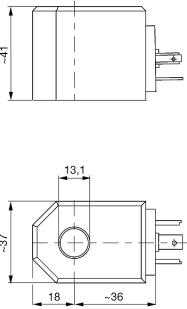
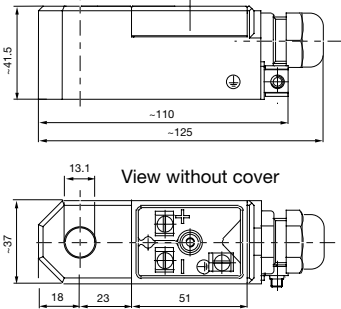









Figure 7

Flow control plate for 5/2 way valves



Technical data of solenoids

Solenoids		With standard protection	For potentially explosive atmospheres		
Drawing					
			View without cover		
Solenoid type	DC	11 A 37	—	—	11 G 52
	AC	11 C 37	11 C 52	—	—
	UC	11 F 37	11 F 52	11 F 53	—
Integrated fuse		no	no	yes	no
Rated voltage (others on request)		24 V, 110 V, 230 V	24 V, 110 V, 230 V	24 V	14 V ... 32 V *)
Operating time		100 %	100 %	100 %	100 %
Ambient temperature		–25 ... +60 °C	–20 ... +50 °C (60 °C)	–20 ... +40 °C	–30 ... +50 °C (65 °C)
Ex-protection		—	Ⓔ II 2 G EEx em II T6 (T5) Ⓔ II 2 D IP65 T 80 °C (T 95 °C)	Ⓔ II 2 G EEx me II T6 Ⓔ II 2 D T70 °C	Ⓔ II 2 G EEx ia IIC T6 (T5)
Degree of protection		IP65	IP65		IP65
Rated power		1.8 W (DC) / 3 VA (AC)	1.8 W (DC) / 3 VA (AC)		0.2 W ... 1.1 W *)
Connection		Plug-in connection according DIN 43650 form A. Available with/without socket.	Terminal box; cable inlet with M 20 x 1.5 gland. Cable ø 6 ... 12 mm		Terminal box; cable inlet with M 20 x 1.5 gland. Cable ø 5 ... 9 mm
Certificate			  		  
Weight		~210 g	~330 g		~330 g

*) dependant on supply device

Detailed information about the entire range of solenoids can be found in separate leaflets.

How to order

Type **LC 0732 CNE oH** NW 7 for air 2 ... 8 bar with solenoid **11 F 53** 230 V 50 Hz
 in accordance with valve data in accordance with solenoid data

Frequency
 Rated voltage
Solenoid type
 Pressure range
 Medium
 Orifice size
Valve type